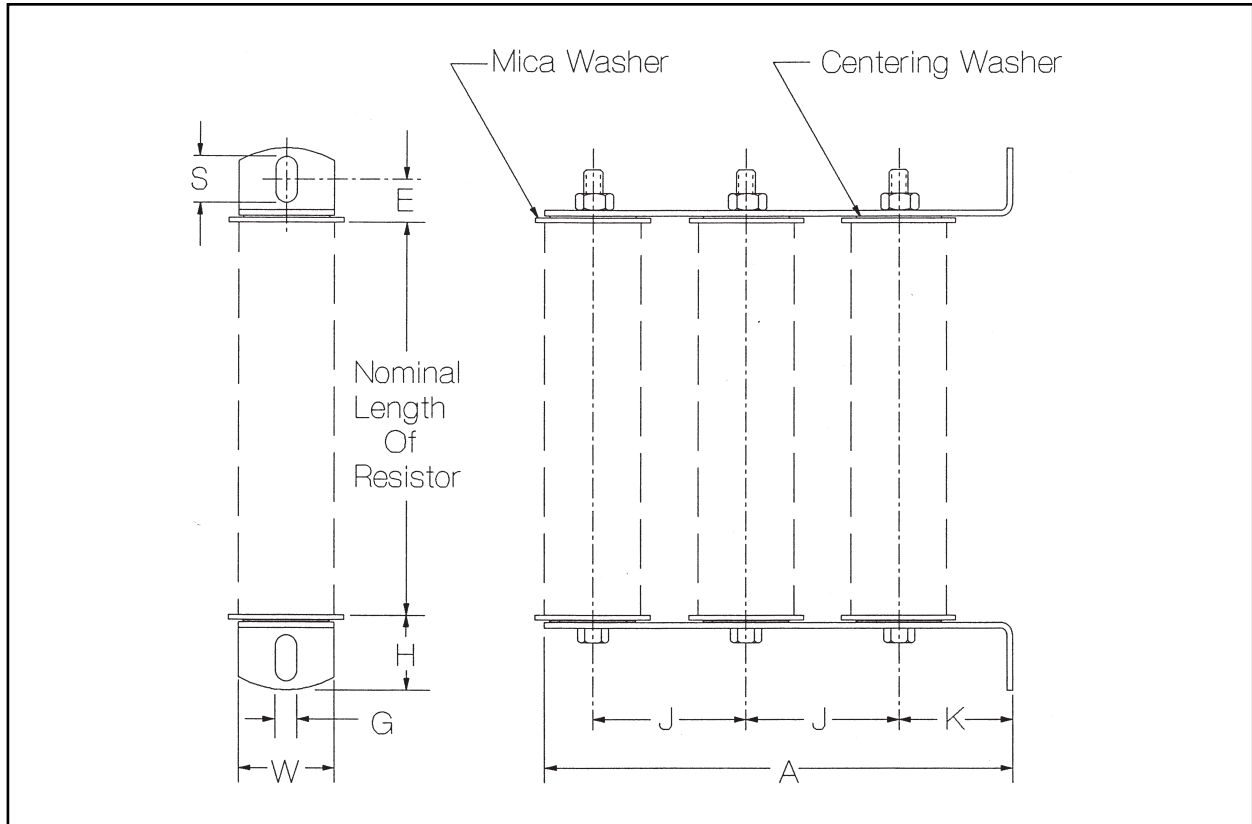


Mounting Hardware



STANDARD CLOSED SLOT L-BRACKETS

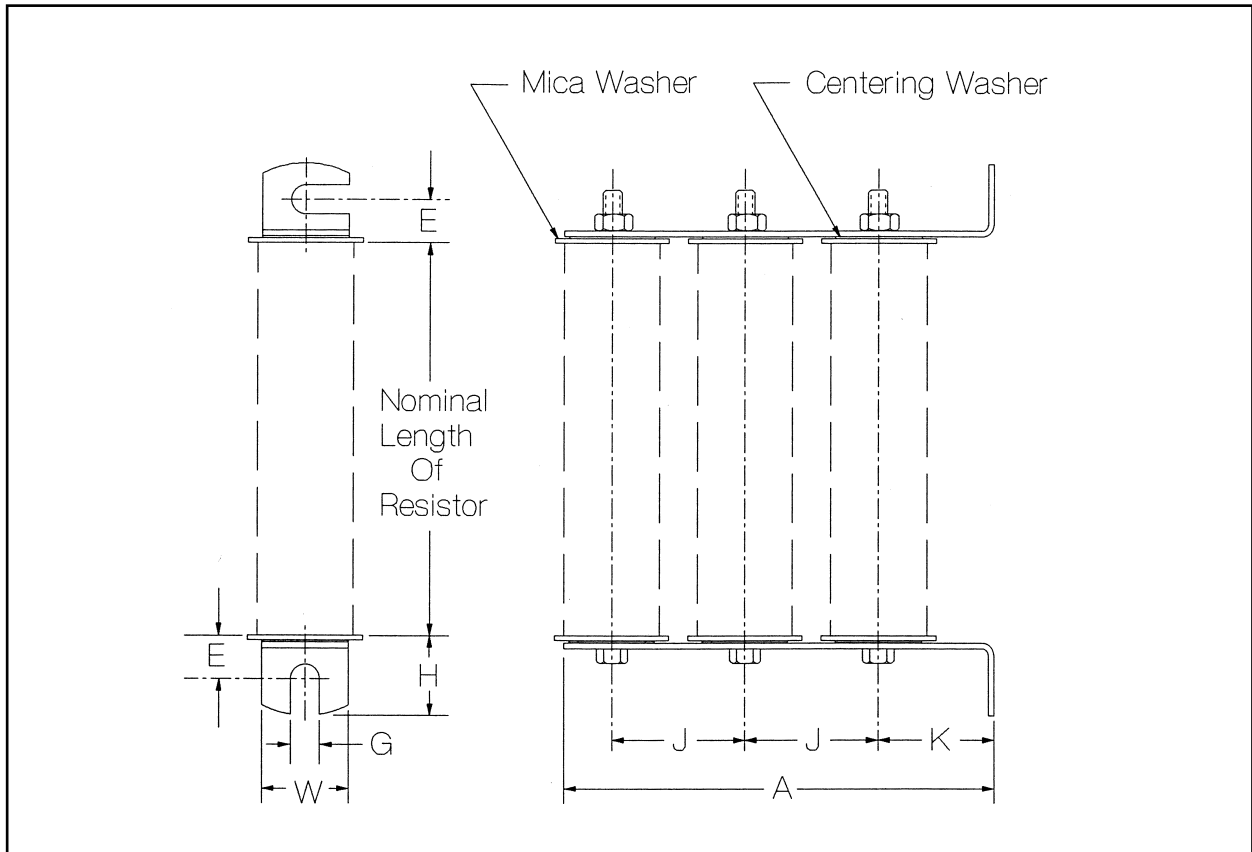
Standard mounting hardware set includes L-brackets, mica washers, centering washers, thru-bolts and fasteners. These may be ordered as kit packs, loose, or assembled to resistors.

TO ORDER, specify SIZE (OD & Length) and NUMBER of RESISTOR(s) to be mounted.

Core OD	No. RES.	W	H	A	K	G	J	E	S
5/16, 7/16, 9/16	1	1/2	13/16	1 3/8	1	7/32	-	1/2	7/16
	2	1/2	13/16	2 3/8	1	7/32	1	1/2	7/16
3/4	1	3/4	13/16	1 5/8	1 1/4	7/32	-	1/2	7/16
	2	3/4	13/16	3 1/4	1 1/4	7/32	1 5/8	1/2	7/16
	3	3/4	13/16	4 7/8	1 1/4	7/32	1 5/8	1/2	7/16
	4	3/4	13/16	6 1/2	1 1/4	7/32	1 5/8	1/2	7/16
1 1/8	1	1 1/4	1 5/16	2 1/16	1 1/2	9/32	-	1/2	9/16
	2	1 1/4	1 5/16	4 1/16	1 1/2	9/32	2	1/2	9/16
	3	1 1/4	1 5/16	6 1/16	1 1/2	9/32	2	1/2	9/16
	4	1 1/4	1 5/16	8 1/16	1 1/2	9/32	2	1/2	9/16
1 5/8	1	1 1/4	1	2 1/16	1 1/2	9/32	-	1/2	9/16
	2	1 5/8	1	5 3/8	1 1/2	9/32	3	1/2	9/16
2 1/2, 3 1/4	Use End-Slot Brackets on following page.								

(All dimensions in inches)

Mounting Hardware



AVAILABLE SIDE SLOT/END SLOT L-BRACKETS

Mounting hardware set includes L-brackets, mica washers, centering washers, thru-bolts and fasteners. These may be ordered as kit packs, loose, or assembled to resistors.

TO ORDER, specify SIZE (OD & Length) and NUMBER of RESISTOR(s) to be mounted.

Core OD	No. RES.	W	H	A	K	G	J	E
$\frac{5}{16}, \frac{7}{16}, \frac{9}{16}$	1	$\frac{3}{4}$	$\frac{7}{8}$	$1\frac{1}{16}$	$\frac{19}{16}$	$\frac{1}{4}$	-	$\frac{1}{2}$
	2	$\frac{3}{4}$	$\frac{7}{8}$	$2\frac{1}{16}$	$\frac{19}{16}$	$\frac{1}{4}$	$1\frac{1}{8}$	$\frac{1}{2}$
$\frac{3}{4}$	1	$\frac{3}{4}$	$\frac{7}{8}$	$1\frac{1}{16}$	$\frac{19}{16}$	$\frac{1}{4}$	-	$\frac{1}{2}$
	2	$\frac{3}{4}$	$\frac{7}{8}$	$2\frac{1}{16}$	$\frac{3}{16}$	$\frac{1}{4}$	$1\frac{1}{8}$	$\frac{1}{2}$
	3	$\frac{3}{4}$	$\frac{7}{8}$	$3\frac{1}{16}$	$\frac{3}{16}$	$\frac{1}{4}$	$1\frac{1}{8}$	$\frac{1}{2}$
$1\frac{1}{8}, 1\frac{1}{2}$	1	$1\frac{1}{8}$	1	$2\frac{1}{16}$	$1\frac{1}{2}$	$\frac{3}{8}$	-	$\frac{1}{2}$
	2	$1\frac{1}{8}$	1	$3\frac{1}{16}$	$1\frac{1}{2}$	$\frac{3}{8}$	$1\frac{1}{4}$	$\frac{1}{2}$
3		$1\frac{1}{8}$	1	$5\frac{1}{16}$	$1\frac{1}{2}$	$\frac{3}{8}$	$1\frac{1}{4}$	$\frac{1}{2}$
$2\frac{1}{2}, 3\frac{1}{4}$ (Both brackets end slot.)	1	$2\frac{1}{2}$	$1\frac{1}{2}$	$4\frac{1}{4}$	3	$\frac{13}{32}$	-	$\frac{7}{8}$

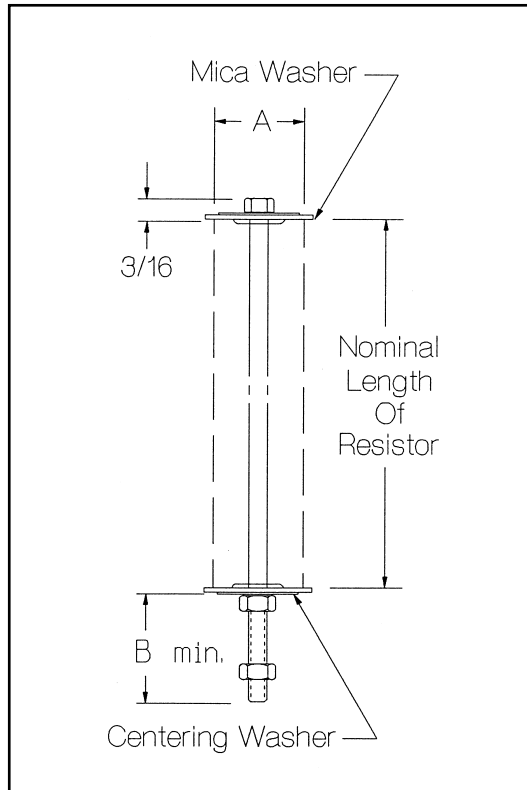
(All dimensions in inches)

Mounting Hardware



VERTICAL MOUNTING HARDWARE

TO ORDER vertical mounting hardware,
specify resistor OD & Length

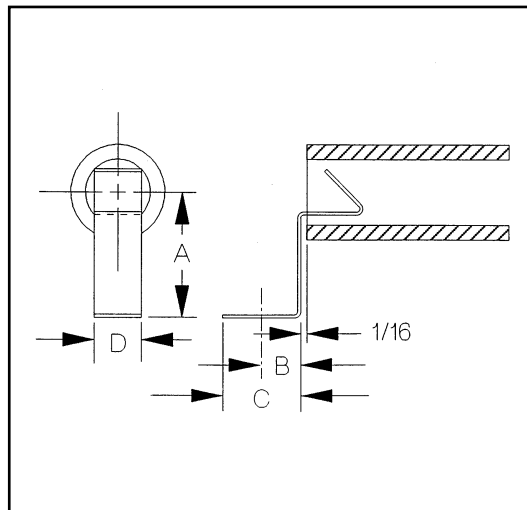


CORE OD	CORE LENGTH	A	B	THRU-BOLT
5/16	1	1/2	3/8	8 - 32 x 1 3/4
5/16	1 3/4	1/2	3/8	8 - 32 x 2 1/2
7/16	2	3/4	5/8	8 - 32 x 2 3/4
9/16	2	3/4	5/8	10 - 32 x 2 3/4
9/16	4	3/4	7/16	10 - 32 x 4 1/2
3/4	6 1/2	1	5/8	10 - 32 x 7 1/4
1 1/8*	8 1/2	1 1/2	1/2	1/4 - 20 x 9 1/4
1 1/8*	10 1/2	1 1/2	1/2	1/4 - 20 x 11 1/4

*Not recommended for high shock or vibration applications.

(All dimensions in inches)
Additional sizes available upon request.

SPRING CLIPS



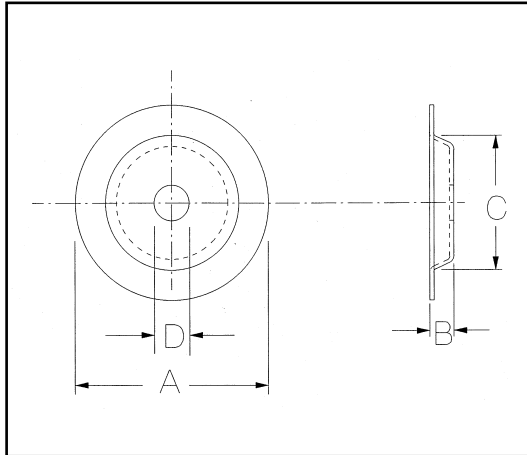
CORE OD	CORE ID	A	B	C	D	HOLE	CAT. NO.
5/16	3/16	5/32	3/16	1 1/32	1/4	0.170	05-CLIP
7/16, 9/16	5/16	5/8	5/16	15/32	1/4	0.170	07-CLIP
3/4	1/2	15/16	1 1/32	5/8	3/8	0.196W 0.359L	12-CLIP
1 1/8	3/4	1 3/8	1 3/32	1 1/16	1/2	0.201W 0.250L	18-CLIP

(All dimensions in inches)

Mounting Hardware



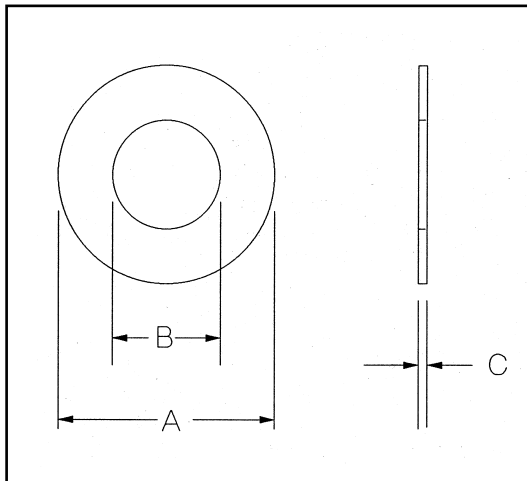
CENTERING WASHERS



CORE	A	B	C	D	PART. NO.
5/16	0.44	0.05	NA	0.188	05-FLAT
7/16, 9/16	0.56	0.10	0.30	0.200	07-CENT
3/4	0.80	0.13	0.45	0.225	12-CENT
1 1/8	1.10	0.16	0.73	0.281	18-CENT
1 5/8	1.63	0.20	1.11	0.281	26-CENT
2 1/2, 3 1/4	2.50	0.23	1.72	0.281	40-CENT

(All dimensions in inches)

MICA WASHERS



CORE	A	B	C	PART. NO.
5/16	1/2	3/16	0.02	05-MICA
7/16, 9/16	3/4	5/16	0.02	07-MICA
3/4	1	1/2	0.03	12-MICA
1 1/8	1 1/2	3/4	0.03	18-MICA
1 5/8	2 1/4	1 1/8	0.06	26-MICA
2 1/2, 3 1/4	3	1 3/4	0.06	40-MICA

(All dimensions in inches)